

$\exists 42^{dc}$

B42^{dc}



342^{dc}

Lenght O.A	12.80 m
Max Beam	3.10 m
Draft	2.40 m
Displacement	5.600 kg
Ballast	3.000 kg
Main Sail Areal	65 mq
Jib Area	35 mq
Fuel Capacity	100 Lt
Water Capacity	100 Lt
Design	Luca Brenta Yacht Design
Certification	CE
Speed (Engine)	8 knots
Propulsion	Volvo D1 27 HP/diesel inboard Saildrive engine
Propeller	Gori 2 blades folding
Service Battery	12V 315 amps
Engine Battery	12V 105 amps
Deck Winches	Two Electric Harken B50.2 winches 2 Speeds
Deck Gear	Harken/Spinlock
Cleats	N. 2 Folding
Mast	Carbon- two spreaders
Boom	Alluminum Boom/ options V-boom or Lesiure Furling
Hydraulic	Cariboni Power Pack
Piston	Mainsail +Vang +Traveller
Construction	Composite carbon fibre over Corecell foam of various densities Rudder S.S. + Jeffa self-aligning bearings Keel Blade - Cast Iron Bulb - Lead

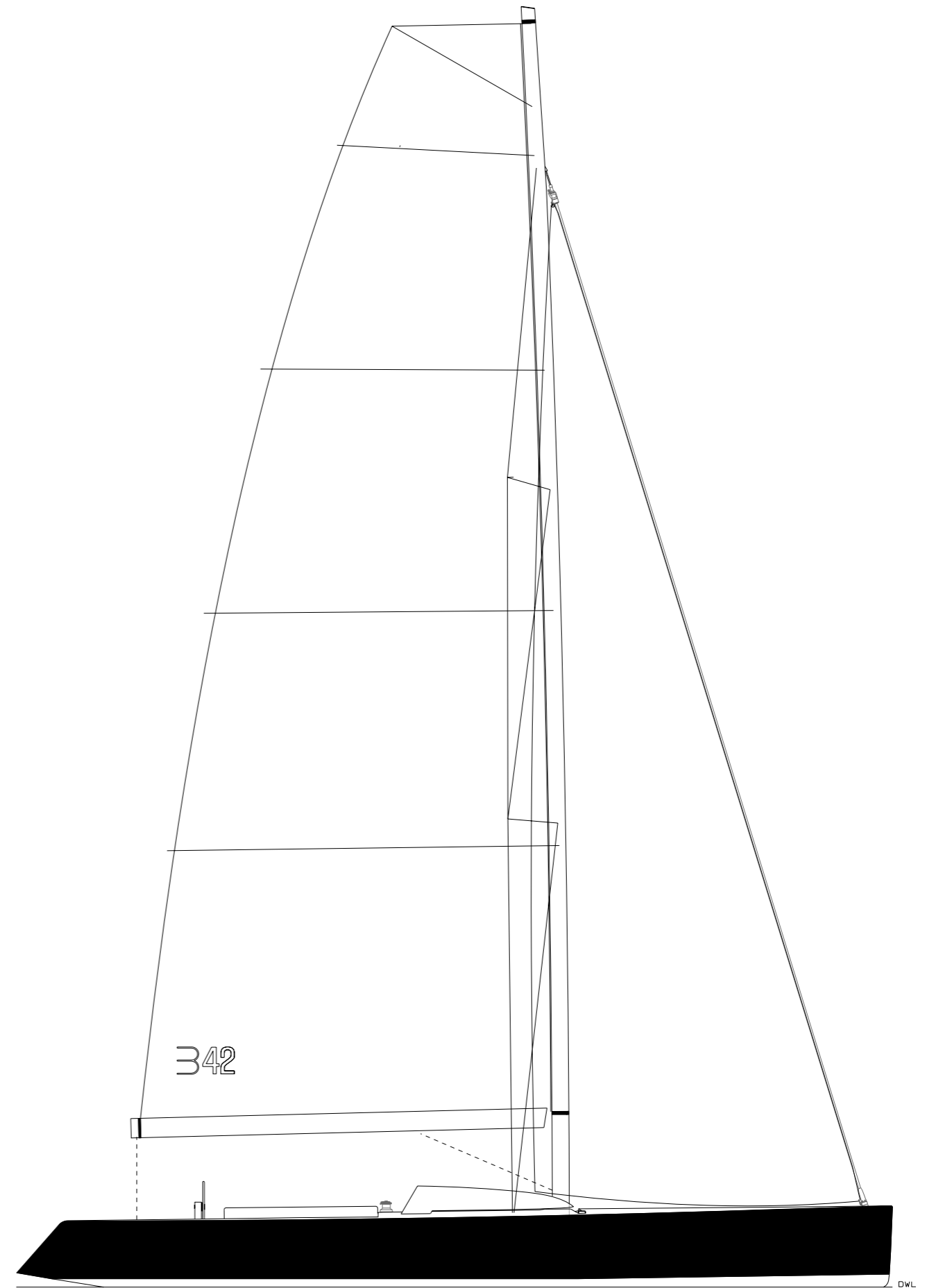
B42^{dc}



B42^{dc}



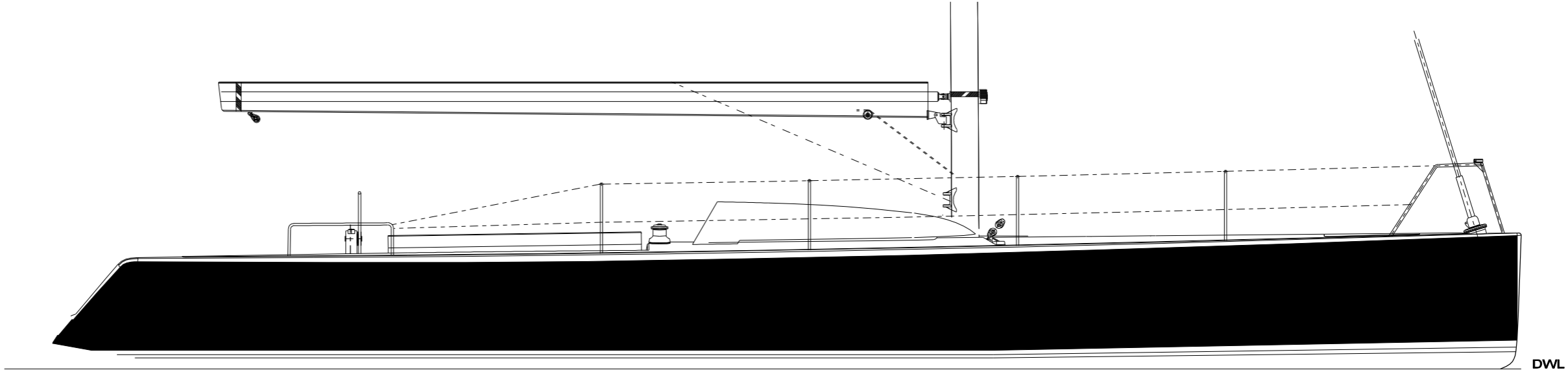
342^{dc}



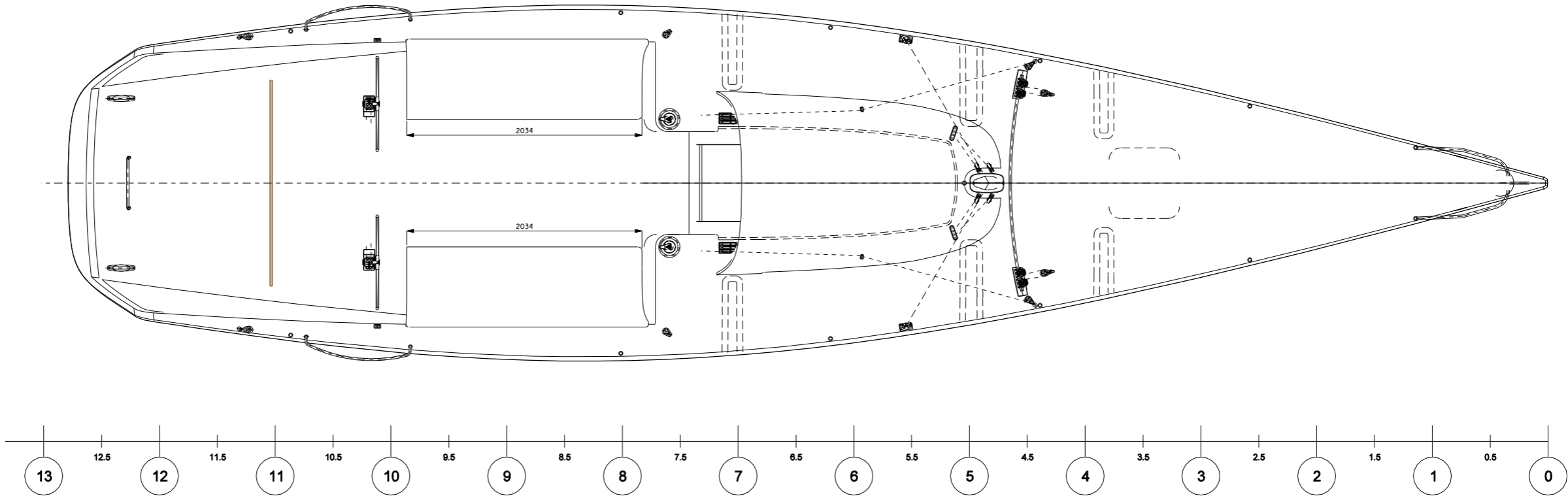
B42^{dc}



B42^{dc}



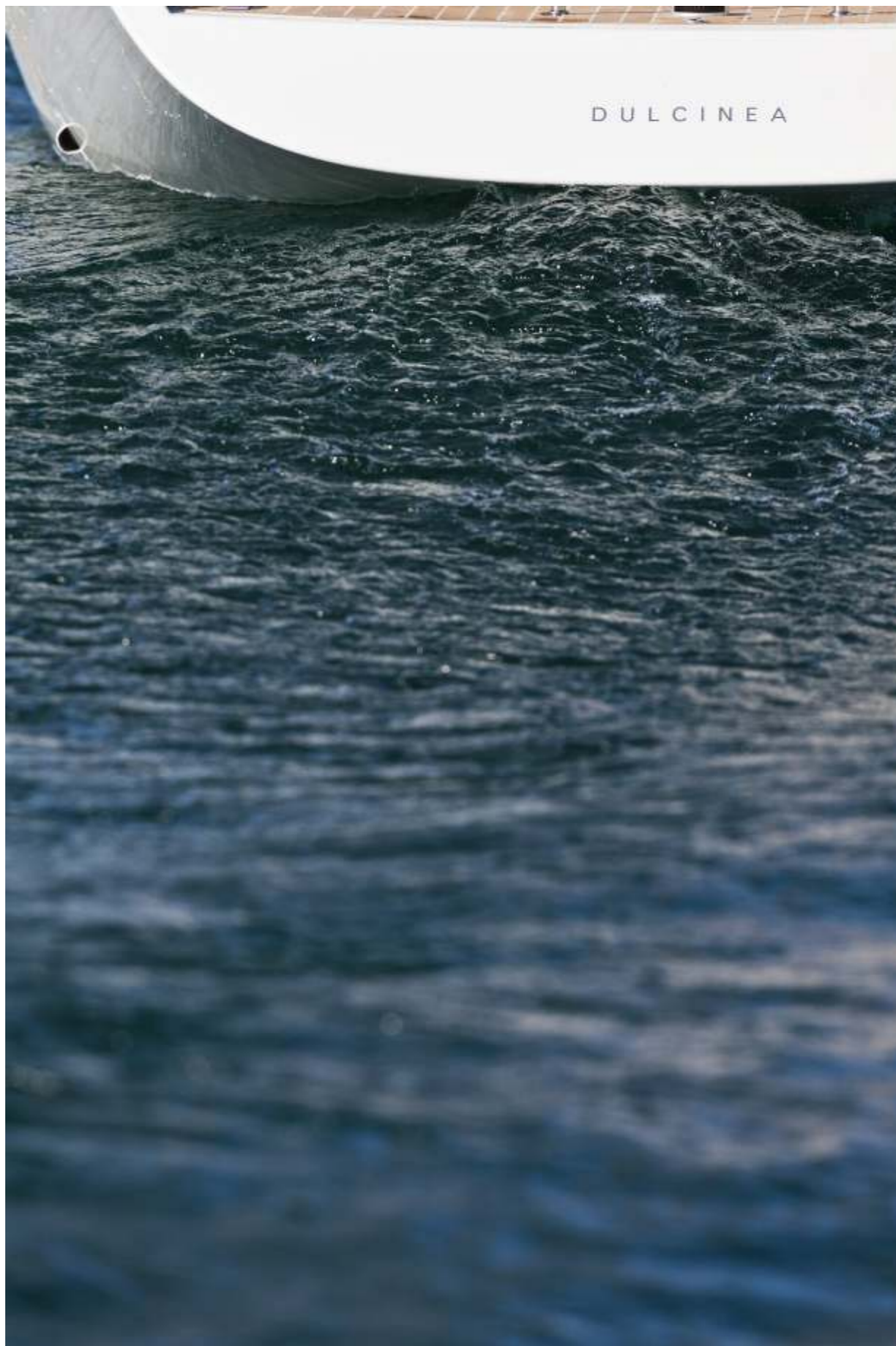
B42 DC



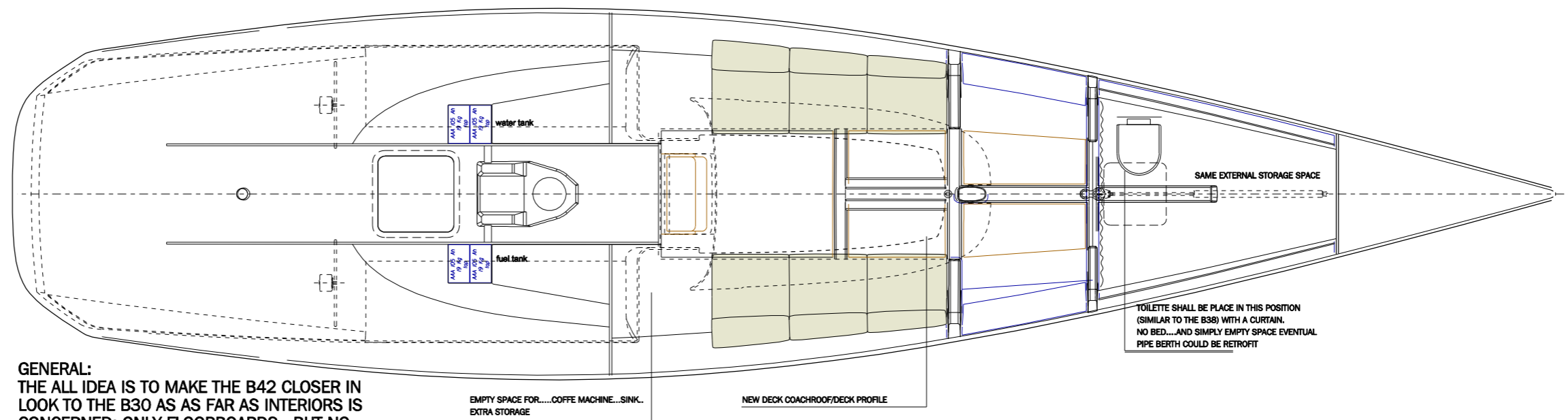
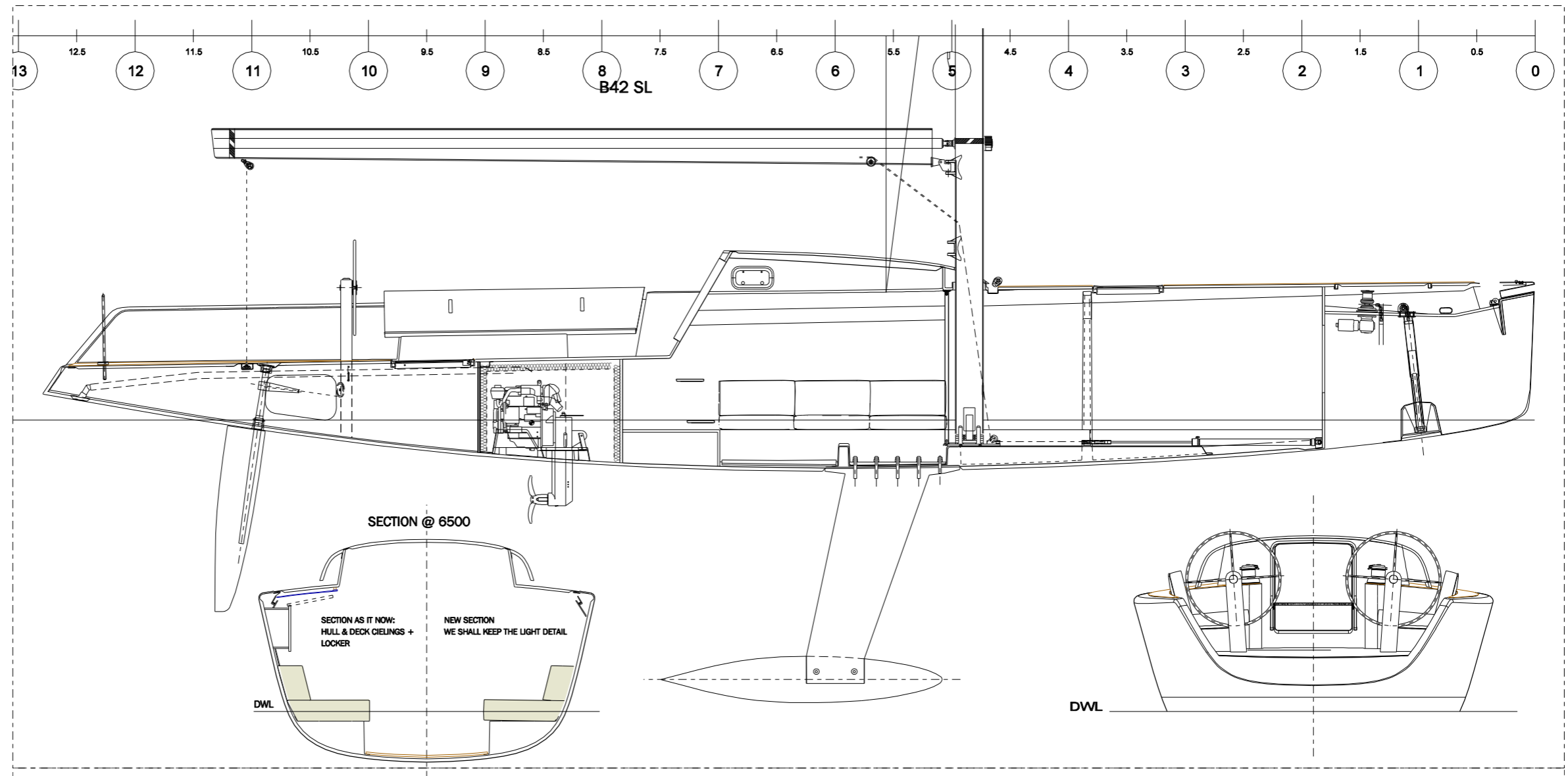
B42^{dc}



B42^{dc}



B42^{dc}



GENERAL:
THE ALL IDEA IS TO MAKE THE B42 CLOSER IN LOOK TO THE B30 AS AS FAR AS INTERIORS IS CONCERNED: ONLY FLOORBOARDS...BUT NO CEILING NO HULL PANELLING (FINISH AS PER B30) NO FORWARD BEDS AND NO LEATHER VERTICAL BAGS. IN PLACE WE COULD THING OF SAIL CLOTH BAGS ON THE SIDES. ONLY UPHOLSTERY WOULD BE THE CUSCHIONS.

MODIFIED B42 INTERIOR LAYOUT

B42^{dc}



B42^{dc}



B-yachts.com